



Disability
Services
Australia



SUPPORTED INDEPENDENT LIVING

Vacancy - Ryde



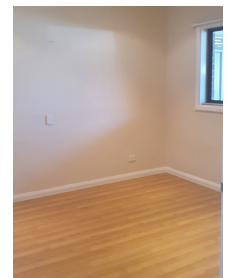
Who we are

Disability Services Australia is a values based organisation offering a range of services that provide opportunities for people to live the life they choose at home, at work and in their community life.

Our Supported Independent Living Services offer so much more than the in-home supports and assistance with self-care that might be necessary for a person to live independently, either on their own or in a shared living arrangement.

We empower people to explore opportunities to live the life they want to, through improved health and wellbeing, a sense of belonging and connection to family and friends, and exploring opportunities for new social activities and interests in the community.

Our range of SIL accommodation models focus on best meeting people's individual needs. We firmly believe that every person should have the support they need to live as independently as possible.



 **4 Vacancies**

You must be eligible for funding under the NDIS (National Disability Insurance Scheme)

SUPPORTED INDEPENDENT LIVING

Vacancy - Ryde

Location: 17-21 North Road, Ryde, NSW 2112

Location features: Located on a large block of land within walking distance to bus stops and Top Ryde shopping centre.

General features: 6 individual villa-style units. Each is self contained and has its own living room, bedroom, bathroom and kitchen. 4 units are single bedroom, 2 units are two bedroom. Large separate common area with adjoining staff room. Large patio and garden

Site layout: 6 modern villa-style units

Current staffing: 24 x 7 including sleepover shift

Total number of residents: 4, capacity for 8 people

Ideal candidates: 18-49, female and male. NDIS participant with complex behaviours of concern

Forecast availability date: Available now

The people living here:



- Current residents are 2 females and 2 males
- Age range is 19-42

The support available:



- Individuals with a psychosocial disability and/or complex behaviours of concern (i.e. intellectual disability, severe and enduring mental illness, trauma) who have mild to moderate functional support needs
- Staff are trained to support individuals with complex behaviours of concern support needs.
- Psychologist allocated to the site to provide behaviour support and therapy (subject to the individual's NDIS funding).
- The service model has capacity to implement restricted practices where required (in line with current legislation and best practice).
- The house has a fully maintained accessible vehicle



Contact DSA's Connections team for more information

☎ 1300 372 121 ✉ customerconnections@dsa.org.au 🌐 www.dsa.org.au