



SUPPORTED INDEPENDENT LIVING

Vacancy - Liverpool



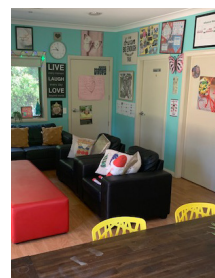
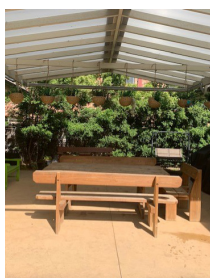
Who we are

Disability Services Australia is a values based organisation offering a range of services that provide opportunities for people to live the life they choose at home, at work and in their community life.

Our Supported Independent Living Services offer so much more than the in-home supports and assistance with self-care that might be necessary for a person to live independently, either on their own or in a shared living arrangement.

We empower people to explore opportunities to live the life they want to, through improved health and wellbeing, a sense of belonging and connection to family and friends, and exploring opportunities for new social activities and interests in the community.

Our range of SIL accommodation models focus on best meeting people's individual needs. We firmly believe that every person should have the support they need to live as independently as possible.



 **2 Vacancies**

You must be eligible for funding under the NDIS (National Disability Insurance Scheme)

SUPPORTED INDEPENDENT LIVING

Vacancy - Liverpool

Location: Liverpool, NSW

Location features: Situated on a large block within walking distance to Liverpool shopping centre, Liverpool train station and restaurants

General features: 3 units with 2 bedrooms to each unit. All units are self contained with a living room, kitchen, bathroom with laundry facility, ducted air conditioning and a small courtyard. Common BBQ and seating area, and a large common area with kitchen that is used for programmed activities.

Site layout: Modern style bricked house with an internal yard area for gardening or just enjoying having a BBQ with friends and family under the pergola.

Current staffing: 24 x 7 with a sleep over shift

Total number of residents: Currently 2 vacancies, capacity for 6 people

Ideal candidates: 18-50, female

Forecast availability date: Available now

The people living here:



- Current residents are 2 males & 2 females
- Age range is 19-25

The support available:



- Individuals with a psychosocial disability (intellectual disability, severe and enduring mental illness, trauma) and/or complex behaviours of concern who have mild to moderate functional support needs, display high or very high risks and may have contact with a number of service systems.
- Staff are trained to support individuals with complex behaviours of concern support needs.
- Psychologist allocated to the site to provide behaviour support and therapy (subject to the individual's NDIS funding).
- The service model has capacity to implement restricted practices where required (in line with current legislation and best practice).



Contact DSA's Connections team for more information

☎ 1300 372 121 ✉ customerconnections@dsa.org.au 🌐 www.dsa.org.au