



Disability  
Services  
Australia



# SUPPORTED INDEPENDENT LIVING

Vacancy - Coachwood Crescent, Picton



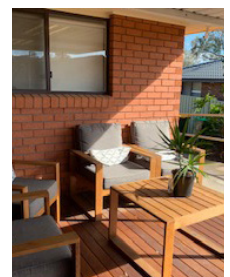
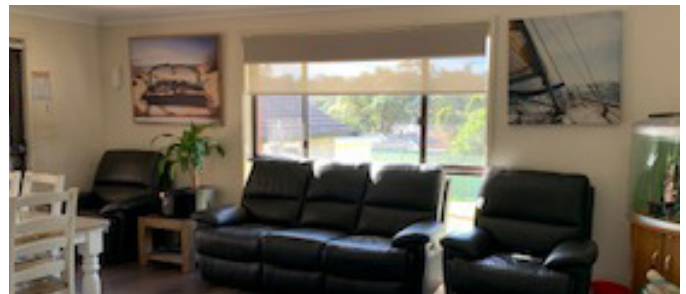
## Who we are

Disability Services Australia is a values based organisation offering a range of services that provide opportunities for people to live the life they choose at home, at work and in their community life.

Our Supported Independent Living Services offer so much more than the in-home supports and assistance with self-care that might be necessary for a person to live independently, either on their own or in a shared living arrangement.

We empower people to explore opportunities to live the life they want to, through improved health and wellbeing, a sense of belonging and connection to family and friends, and exploring opportunities for new social activities and interests in the community.

Our range of SIL accommodation models focus on best meeting people's individual needs. We firmly believe that every person should have the support they need to live as independently as possible.



 **1 Vacancy**

You must be eligible for funding under the NDIS (National Disability Insurance Scheme)

# SUPPORTED INDEPENDENT LIVING

## Vacancy - Coachwood Crescent, Picton

<b>Location:</b>	Picton, Wollondilly NSW
<b>Location features:</b>	Single block on a quiet street, located close to shops, local GPs and pharmacy. Buses and trains are easily accessible in the area
<b>General features:</b>	4-bedroom free standing house with 2 living areas, open plan kitchen, accessibility ramps to the front and back door. Combined bathroom, second separate toilet and laundry. Undercover BBQ area and backyard.
<b>Site layout:</b>	Older style free standing house
<b>Current staffing:</b>	24 x 7 including a sleepover shift
<b>Total number of residents:</b>	3 with capacity for 4
<b>Ideal candidates:</b>	Would suit a male aged 18 – 60 years, with complex needs
<b>Forecast availability date:</b>	Available now

---

### The people living here:



- Current residents are 3 males
- Age range is 54-65

### The support available:



- The house has support on site 24 x 7 including a sleepover shift
- Staff supporting people in this service have specific skills and competencies in
  - Positive Behaviour Support
  - Medical administration training
  - Catheter care support
  - Mealtime management support
- The house has a fully maintained accessible vehicle



Disability Services Australia

Contact DSA's Connections team for more information

☎ 1300 372 121

✉ [customerconnections@dsa.org.au](mailto:customerconnections@dsa.org.au)

🌐 [www.dsa.org.au](http://www.dsa.org.au)